

# AI@EDGE

## A SECURE AND REUSABLE ARTIFICIAL INTELLIGENCE PLATFORM FOR EDGE COMPUTING IN BEYOND 5G NETWORKS

### PROJECT GOALS

#### FRAMEWORK



Develop a **general-purpose framework for closed-loop network automation** capable of supporting flexible and programmable pipelines for the creation, utilization, and adaptation of the secure, reusable, and trustworthy AI/ML models.

#### PLATFORM

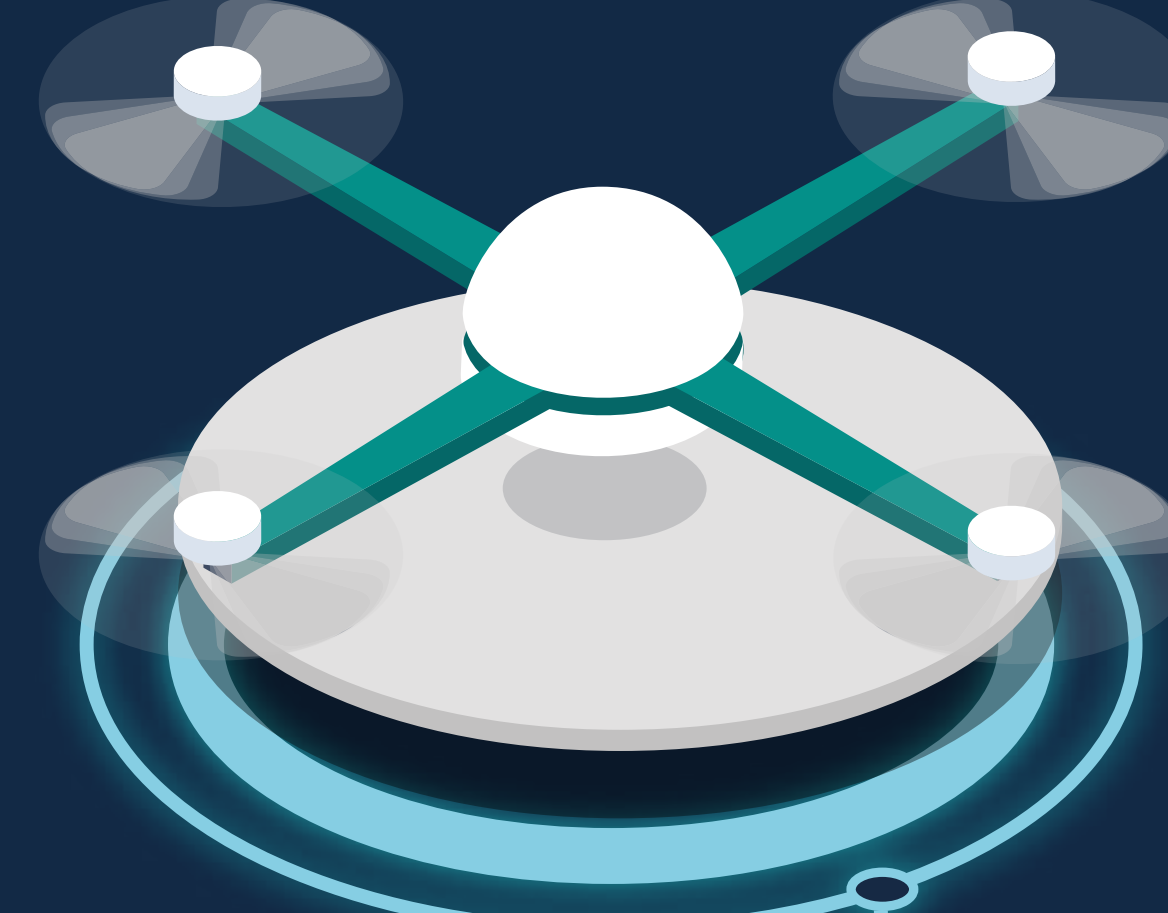


Integrating a **converged connect-compute platform** for creating and managing resilient, elastic, and secure end-to-end slices capable of supporting a diverse range of AI-enabled network applications.

Virtual validation of vehicle cooperative perception



Edge AI assisted monitoring of linear infrastructures using drones in BVLOS operation



Smart content & data curation for in-flight entertainment services



Secure and resilient orchestration of large (I)IoT networks



This project has received funding from the European Union's Horizon 2020 research and innovation programme under grant agreement No 101015922



The 5G Infrastructure Public Private Partnership

